



Redefining Ideas

MOTORISED EXAMINATION COUCHES



Index

Introduction.....	01
Mi - 4004 B	02
Mi - 7075	04
Mi - 2002	06
Mi - 2032	08
Mi - 2010	10
Mi - 4003 B	12

Designed using state-of-the-art design tools, our products are built to last! Equipped with over 1,00,000+ sq. ft. of available manufacturing area, in-house robotic welding, modern conveyerised pre-treatment, and powder coating, Medimek can offer such products consistently

Quality

Medimek is an ISO 13485 : 2016 and ISO 9001 : 2015 certified organization. It demonstrates that we can provide medical devices and related services that consistently meet customer and applicable regulatory requirements

Mechanical & Electrical Safety

All products are tested at 2.5 times the safe working load and comply with IEC 60601-1 (General requirements for basic safety and essential performance)

Powder Coating

With an in-house modern conveyerized powder coating & pre-treatment plant, we ensure that our products excel during operation in the harsh clinical environment

Manufacturing

Our manufacturing capabilities include in-house robotic welding and laser cutting which help in delivering reliable build quality and ensure repeatability during manufacturing

Mi-4004 B

Motorised Two Section Examination Couch

Models Available:

1. Mi-4004 B (Motorised backrest and height adjustment)
2. Mi-4004 B-G (Motorised height adjustment, gas spring assisted backrest adjustment)

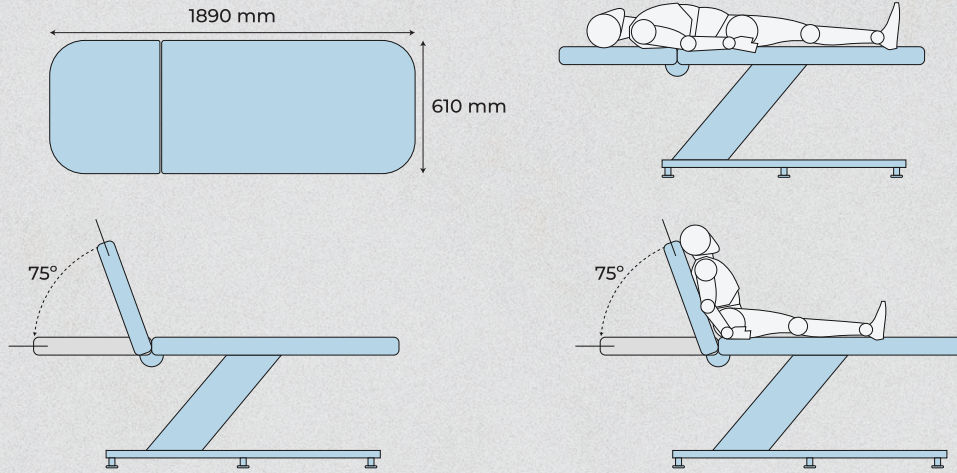


With optional
BP apparatus tray



With optional MS protective base
cover, optional footswitch





Features:

1. Electrical height adjustment
2. Choice of electrical or gas spring assisted backrest adjustment
3. Epoxy-coated frame. Mattress made from vinyl upholstery and pressure relieving foam
4. Paper roll holder fitted as standard accessory on all models
5. Utility drawer for storage of examination essentials close at hand
(Note: Factory fitted drawer position on right hand side of patient lying position)

Specifications:

Mattress Platform dimensions	1890 mm (L) x 610 mm (W) (Approx. 74" x 24")
Height adjustment range	500 mm to 825 mm (Approx. 20" to 33")
Backrest angle	0° to 75°
Patient weight carrying capacity	150 kg
Safe working load	170 kg

* All measurements have a tolerance of ± 10 mm * All angular measurements have a tolerance of 5°

Add-On Accessories:

1. Battery backup facility
2. BP apparatus tray in MS
3. Pair of side railings in MS powder coated (Mi-1013)
4. Single piece side railing in MS powder coated (Mi-1013 A)
5. Easy to clean MS protective base cover (Mi - 1058)

Options:

1. Choice of hand or footswitch operation on all models

Colors Available:



Pastel Green



Pink



Mushroom



Grey



Black



Blue

Mi-7075

Motorised Gynaecology Couch



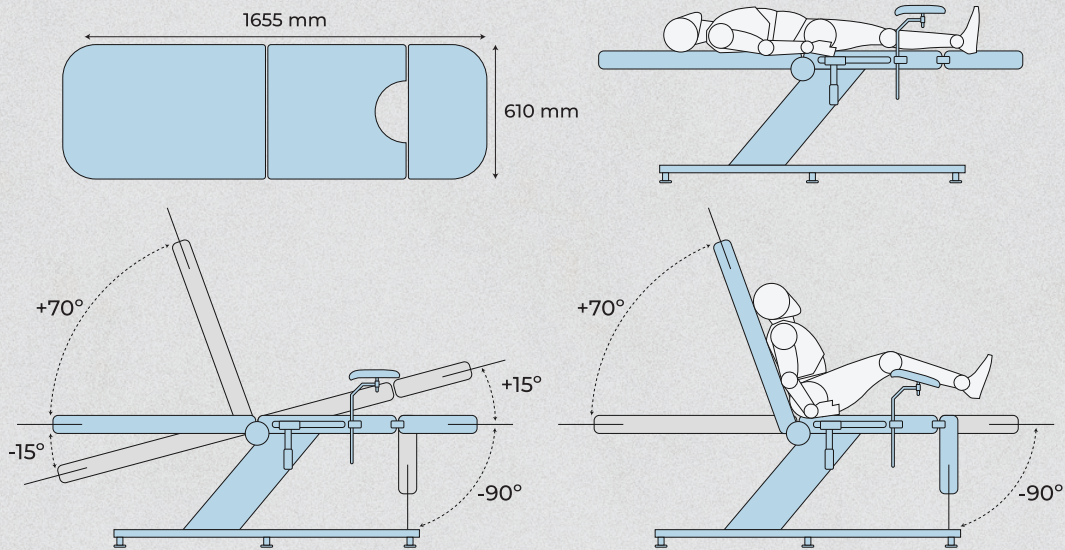
Designed for general gynaecological examination that helps with ergonomic positioning of the patient

SS 304 grade waste collection tray



Fully adjustable padded leg supports (pair)





Features:

1. Electrical height, backrest and pelvic tilt adjustments
2. Epoxy-coated frame. Mattress made from vinyl upholstery and pressure relieving foam
3. Paper roll holder fitted as standard accessory on all models
4. Crescent shape seat section design for optimal access during examination
5. Fully adjustable padded leg supports (Pair)
6. Fold down leg extension
7. Pair of handgrips for patient security and positioning
8. SS 304 grade waste collection tray

Specifications:

Mattress platform dimensions	1655 mm (L) x 610 mm (W) (Approx. 67" x 24")
Height adjustment range	630 mm to 940 mm (Approx. 25" to 37")
Backrest angle	0° to 70°
Trendelenburg tilt angle	0° to 15°
Patient weight carrying capacity	150 kg
Safe working load	170 kg

* All measurements have a tolerance of ± 10 mm * All angular measurements have a tolerance of 5°

Add-on Accessories:

1. Battery backup facility

Options:

1. Choice of hand or footswitch operation on all models

Colors Available:



Pastel Green



Pink



Mushroom



Grey



Black



Blue

Mi-2002

Motorised Daycare Couch

Models Available:

1. Mi-2002 A (Motorised Daycare Couch supplied without multi-adjustable armrests)



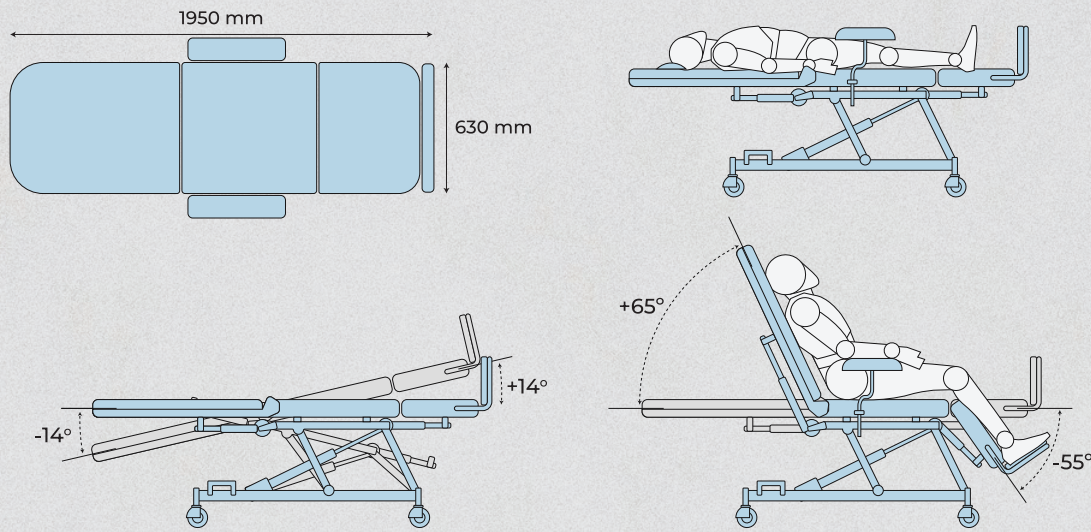
Electrical adjustment of the sections helps achieve the comfort that the patient deserves

Trendelenburg position can be achieved in case of an emergency



Provision for mounting of optional Food Tray





Features:

1. Electrical height, backrest, foot and trendelenburg adjustment
2. Motorised CPR function and single button chair position for easy ingress for the patient
3. Epoxy-coated frame. Mattress made from vinyl upholstery and pressure relieving foam
4. Paper roll holder fitted as standard accessory on all models
5. Multi-adjustable armrests for patient comfort
6. Adjustable upholstered footboard to accomodate taller patients
7. Supplied with removable head cushion
8. 125 mm diameter castors (All 4 with brake)
9. Pre-fitted sockets for mounting of heavy duty telescopic infusion pump poles
10. Pre-fitted sockets for mounting of food table

Specifications:

Dimensions (with armrests & footboard)	2000 mm (L) x 1000 mm (W) (Approx. 78"x 39")
Mattress platform dimensions	1910 mm (L) x 630 mm (W) (Approx. 77"x 25")
Height adjustment range	610 mm to 710 mm (Approx. 24" to 28")
Backrest angle	0° to 65°
Leg section adjustment	0° to 55°
Trendelenburg angle	0° to 14°
Patient weight carrying capacity	150 kg
Safe working load	170 kg

* All measurements have a tolerance of ± 10 mm * All angular measurements have a tolerance of 5°

Add-On Accessories:

1. Battery backup facility
2. Heavy duty telescopic infusion pump pole - SS (Mi-1066)
3. Height adjustable utility tray for usage as Food Table (Mi-1064)

Colors Available:



Mi-2032

Motorised Multi-treatment Couch

Models Available:

1. Mi-2032 A (Motorised multi-treatment couch supplied without multi-adjustable armrests)



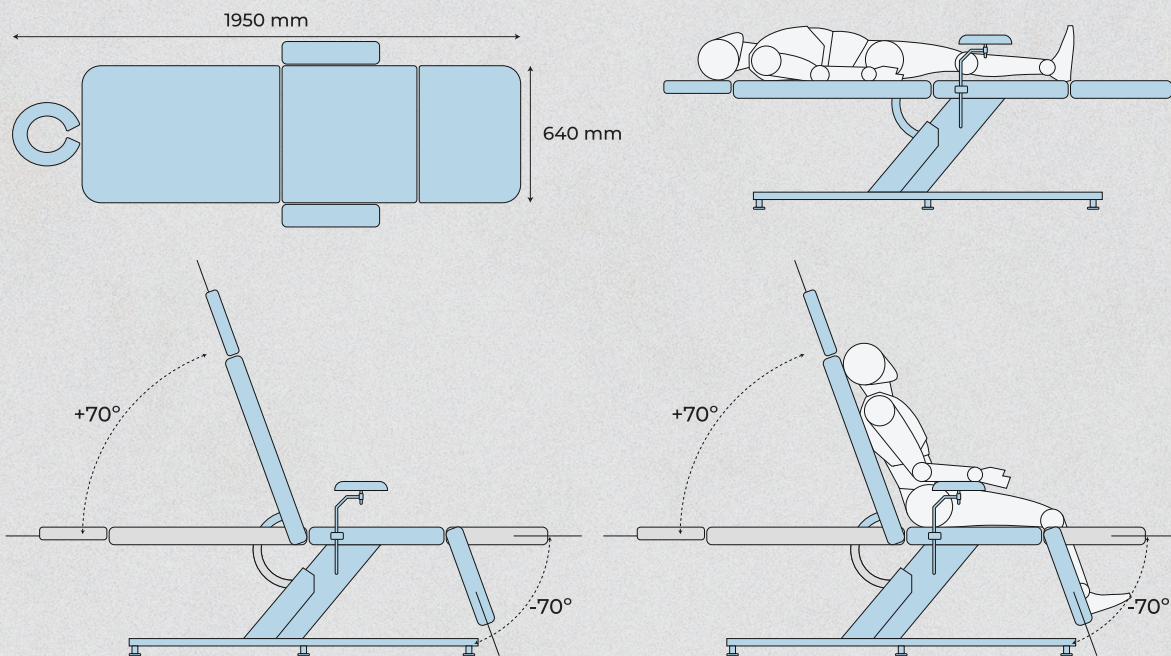
Provides unobstructed access to the head and neck region

Barrier free access to the patient for skin/hair treatments



Flat headrest included as a standard accessory





Features:

1. Electrical height, backrest and knee rest adjustments
2. 4 section mattress with Horseshoe shaped headrest for easy access of the patient
3. Epoxy-coated frame. Mattress made from Vinyl upholstery and pressure relieving foam
4. Multi-adjustable armrests for patient comfort (Pair)
5. Paper roll holder fitted as standard accessory on all models
6. Flat headrest included as a standard accessory.

Specifications:

Mattress platform dimensions	1850 mm (L) x 640 mm (W) (Approx. 73" x 25")
Height adjustment range	530 mm to 850 mm (Approx. 21" to 33")
Backrest angle	0° to 70°
Knee rest angle	0° to 70°
Patient weight carrying capacity	150 kg
Safe working load	170 kg

* All measurements have a tolerance of ± 10 mm * All angular measurements have a tolerance of 5°

Add-on Accessories:

1. Battery backup facility
2. Removable flat headrest for patient comfort and positioning (Mi-1045)
3. Easy to clean MS protective base cover (Mi-1058)

Options:

1. Choice of hand or triple footswitch operation on all models

Colors Available:



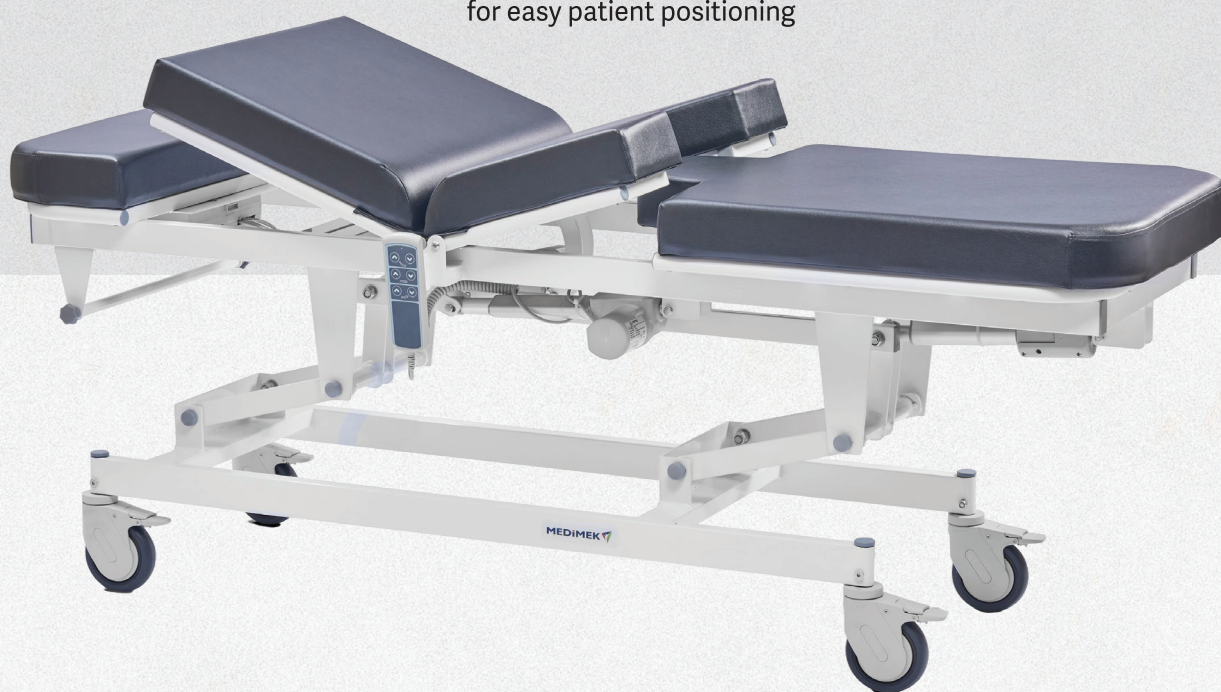
Mi-2010

Motorised ultrasonography couch

Models Available:

1. Mi-2010 (Backrest, height & pelvic adjustments on motor)
2. Mi-2010 S (Above model without castors)
3. Mi-2010 B (Pelvic section & height adjustment on motor)
4. Mi-2010 BS (Above model without castors)

Backrest and pelvic sections electrically adjusted for easy patient positioning

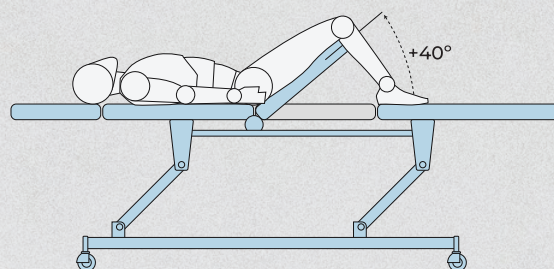
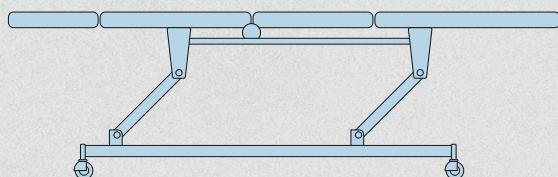
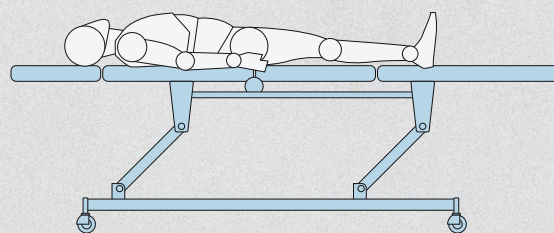
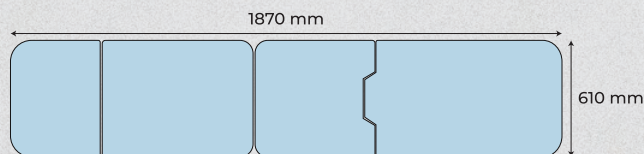


All four castors with brake for additional stability of the product



Excellent height range that helps the caregiver during sonography





Features:

1. Fixed head section, electrical backrest adjustment to enable neck flexion during USG procedure (For model 2010)
2. Electrical pelvic section adjustment for proper positioning during transvaginal ultrasound procedure (For models Mi-2010 & Mi-2010 B)
3. Epoxy-coated frame. Mattress made from vinyl upholstery and pressure relieving foam
4. Paper roll holder fitted as standard on all models
5. 125 mm diameter castors (All 4 with brake) (For models Mi-2010, Mi-2010 B, Mi-2010 C)

Specifications:

Platform dimensions	1870 mm (L) x 610 mm (W) (Approx. 74"x 24")
Height adjustment range	680 mm to 925 mm (Approx. 27" to 36")
Backrest angle	0° to 70° (For Model Mi-2010 & Mi-2010 S)
Pelvic angle	0° to 40° (For models Mi-2010 & Mi-2010 B & Mi-2010 BS)
Patient weight carrying capacity	150 kg
Safe working load	170 kg

* All measurements have a tolerance of ± 10 mm * All angular measurements have a tolerance of 5°

Add-On Accessories:

1. Battery backup facility
2. Pair of side railings in MS powder coated (Mi-1013)
3. Single piece side railing in MS powder coated (Mi-1013 A)
4. Single drawer placed under the couch for storage of ultrasound gel and other items

Options:

1. Choice of hand or triple footswitch operation on certain models

Colors Available:



Pastel Green



Pink



Mushroom



Grey



Black



Blue

Mi-4003 B

Motorised examination table with castors

Models Available:

1. Mi-4003 B (Motorised backrest and height adjustment)
2. Mi-4003 BS (Above model without castors)
3. Mi-4003 B-G (Motorised height adjustment, gas spring assisted backrest adjustment)
4. Mi-4003 BS-G (Above model without castors)

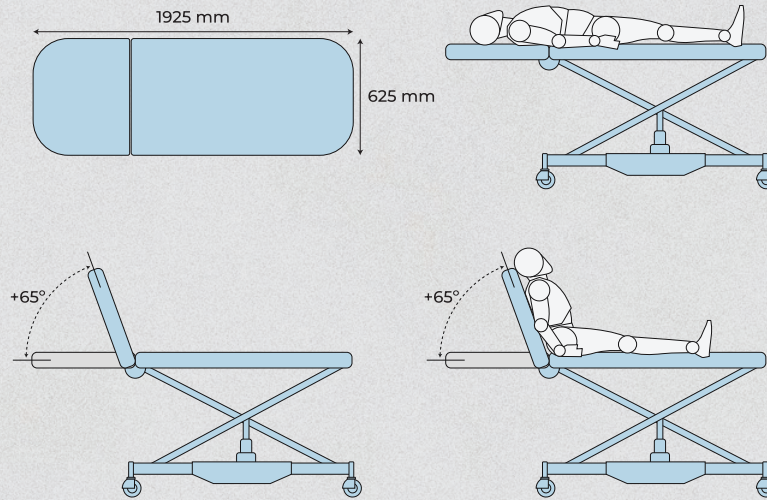


Paper roll holder is handy to install paper roll



Excellent maximum height that helps in examining the patient





Features:

1. Electrical height adjustment (for model Mi-4003 B and Mi-4003 B-G)
2. Electrical backrest adjustment (for model Mi-4003 B)
3. Epoxy-coated frame. Mattress made from Vinyl upholstery and pressure relieving foam
4. Paper roll holder fitted as standard on all models
5. 125 mm diameter castors (All 4 with brake)

Specifications:

Platform dimensions	1925 mm (L) x 625 mm (W) (Approx. 76" x 25")
Height adjustment range	580 mm to 875 mm (Approx. 23" to 34")
Backrest angle	0° to 65°
Patient weight carrying capacity	150 kg
Safe working load	170 kg

* All height measurements have a tolerance of ± 10 mm * All angular measurements have a tolerance of ± 5

Add-On Accessories:

1. Battery backup facility
2. BP apparatus Tray in MS
3. Pair of side railings in MS (powder coated) (Mi-1013)
4. Single piece side railing in MS (powder coated) (Mi-1013A)

Options:

1. Choice of hand or footswitch operation on all models

Colors Available:



Pastel Green

Pink

Mushroom

Grey

Black

Blue



Medimek Industries

B/50-53, Additional MIDC, Anand Nagar, Ambernath [E] - 421 506

Dist. Thane, Maharashtra, India. • Tel. : +91- 251- 2621124 / 2621242 / 8888 2000 65

Email: sales@medimek.com • www.medimek.com

Certifications: ISO-9001 • ISO-14001 • ISO-45001 • ISO-50001 • ISO-13485 • CE Certificate